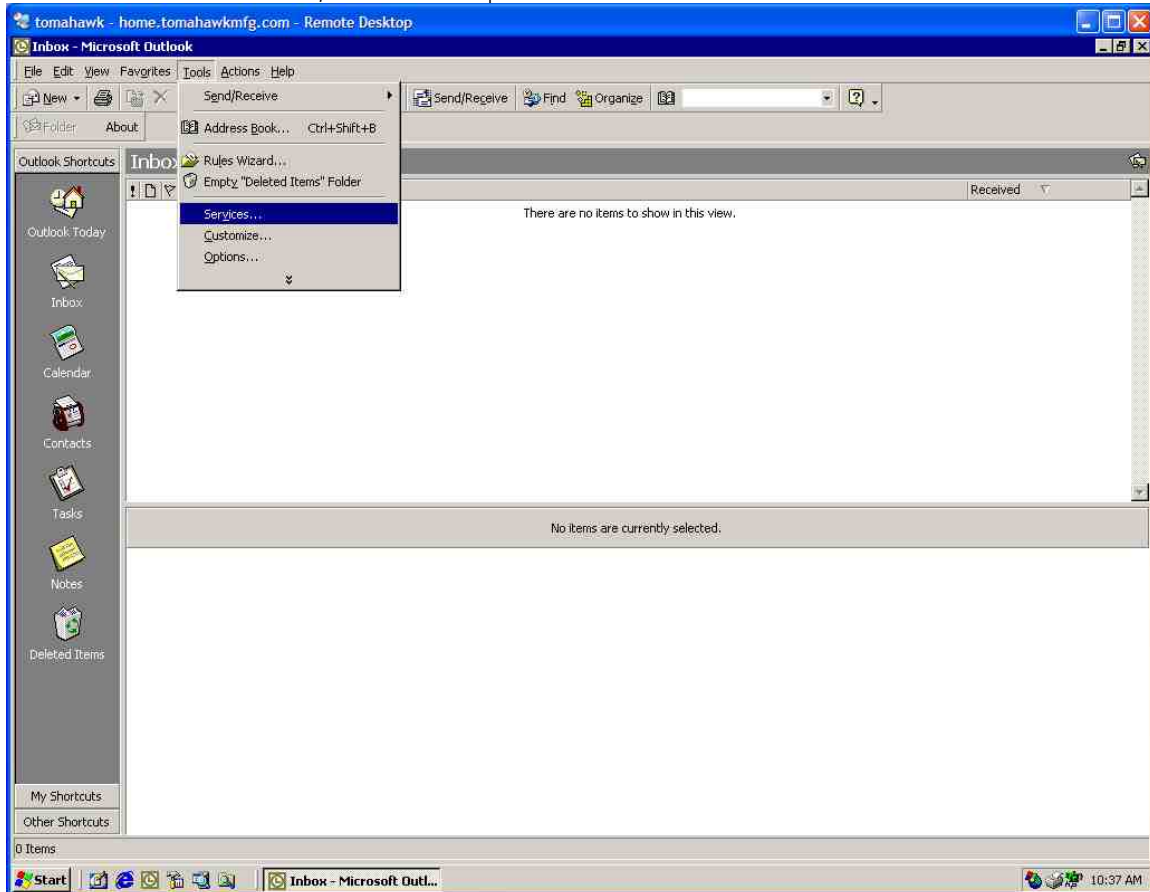




## Outlook 2000 Mail Configuration

This document assumes you already have had Aditus configure a mailbox for you.

Start Microsoft Outlook, click Tools | Services

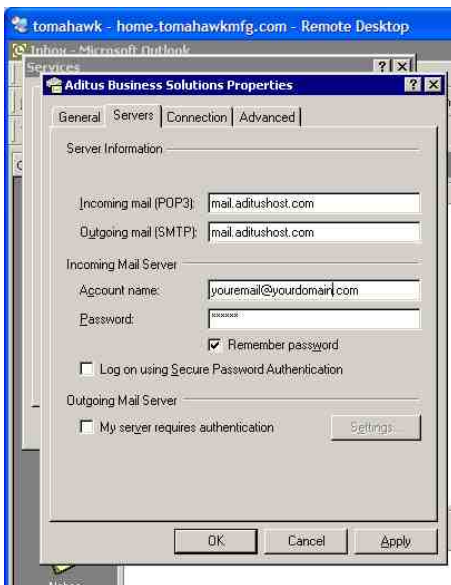
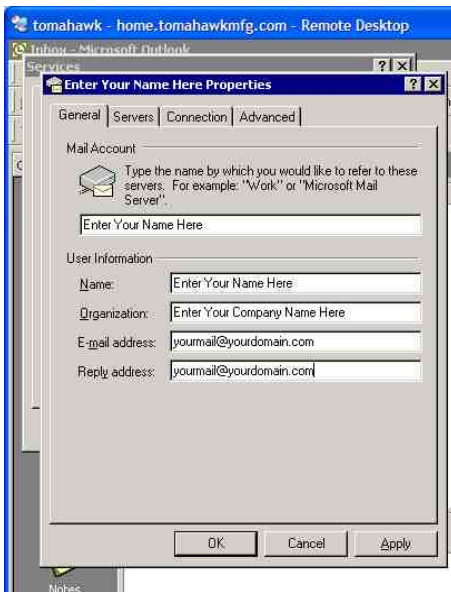


When the Services Dialog comes up click the item that starts "Internet E-Mail ...". Then click the properties button.



## Outlook 2000 Mail Configuration

If the form is not filled out, fill it out as described in the picture to the left. It is critical that you type your e-mail address accurately.



Under the Servers tab make sure the incoming POP3 and outgoing SMTP servers are mail.aditushost.com.

Click OK twice, your e-mail should now properly send and receive through our mail servers using Outlook 2000.